

CARPET SPOT REMOVER WIPES combine powerful cleaning agents with waste-digesting bacteria to produce a product that literally "wipes" away heavy soils and stains.

Within seconds after a CARPET SPOT REMOVER WIPE is applied to a stain, the cleaning agents and surfactants are already working to separate the soil from the carpet fibers. Once the stain is separated from the fibers, the bacteria go to work to digest any organic matter that may be present, as well as any odors that may accompany the stain.

CARPET SPOT REMOVER WIPES remove some of the toughest stains like: wine, coffee, juice, oil, ketchup, blood, ink, pet accidents, vomit and more. And they're not only great to use on carpets, but they also remove stains from upholstery too.

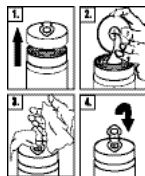
DIRECTIONS:

Spot Removing: Blot stained spot with a towel until the stain begins to disappear. Set-in stains may require additional blotting or rubbing.

Odor Elimination: Once stain is removed, place a fresh towel over the affected area and moisten with water. Leave for 24 hours so the natural bacteria in the towel may destroy the odor and eliminate unseen organic matter.

DIRECTIONS FOR DISPENSING:

1. Remove lid by lifting upward.
2. Pull towel from center of the roll and thread through "X" on the underside of the lid.
3. Close lid. Pull towel at 90° angle.
4. Snap hinged cap back into place to ensure towels stay moist.



CARPET SPOT REMOVER WIPES

SPOT REMOVER FOR CARPET & UPHOLSTERY

SPECIALLY SELECTED ENZYME-PRODUCING
BACTERIA NEUTRALIZES ODORS

CAUTION

May irritate eyes and skin.

See side panel for additional precautions.

KEEP OUT OF REACH OF CHILDREN

Contains 40 - 10"x12" premoistened towels

CAUTION:

May irritate eyes and skin. Avoid contact with eyes and skin.

FIRST AID:

If In Eyes: Flush with plenty of cool water for at least 15 minutes. If irritation persists, obtain medical assistance.

If On Skin: Wash with soap and water. If irritation is persistent, contact a physician.

If Swallowed: Contact a physician or poison control center immediately. Give person several glasses of water. DO NOT induce vomiting unless directed by a physician.

KEEP OUT OF REACH OF CHILDREN

See M.S.D.S. for complete safety information.

Handling & Storage: Keep container tightly closed when not in use. Keep away from excessive heat. Do not store in unmarked containers. Rinse empty container before disposal.

1546*031207

This Product Contains	CAS Number
Water	7732-18-5
Bacillus Culture	Np CAS Number
Surfactant Blend	Proprietary
Sodium Bicarbonate	144-55-8
1-Butoxy-2-Propanol	5131-66-8

NFPA® RATINGS
Flammability

