

These wipes are premoistened with a unique citrus-based formula designed to clean and polish stainless steel surfaces while protecting them against the damaging effects of oxidation and corrosion.

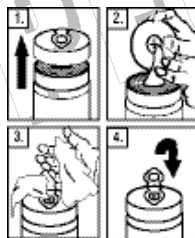
Each wipe will remove hard-water stains, grease smudges, oily fingerprints and food spills and residue from virtually any stainless steel surface or appliance. As they clean, they also brighten, polish and protect the surface with a clear coating that acts like a protective shield.

DIRECTIONS:

Scrub surface with abrasive side of towel until stains and deposits disappear. Use the smooth side to wipe the surface clean. Discard used towel. For a super shine, buff lightly with a soft towel after application.

DIRECTIONS FOR DISPENSING:

1. Remove lid by lifting upward.
2. Pull towel from center of the roll and thread through "X" on the underside of the lid.
3. Close lid. Pull towel at 90° angle.
4. Snap hinged cap back into place to ensure towels stay moist.



STAINLESS STEEL CLEANER WIPES

CLEANS, POLISHES & PROTECTS

PREVENTS WATER MARKS & CORROSION

CAUTION - COMBUSTIBLE

Harmful or fatal if swallowed.

May cause eye and skin irritation.

See side panel for further precautions and first aid instructions.

KEEP OUT OF REACH OF CHILDREN

Net Contents: 40 - 9.5"x12" premoistened towels

CAUTION - COMBUSTIBLE

Harmful or fatal if swallowed. Can enter lungs and cause damage. May cause eye and skin irritation. Avoid contact with skin and clothing. Wash thoroughly after handling. Keep away from heat and flame.

FIRST AID:

If In Eyes: Flush with water for at least 15 minutes. If discomfort persists, see a physician.

If Swallowed: Do NOT induce vomiting. Give person several glasses of water. Do not give water to an unconscious person. Call a physician immediately.

If On Skin: Wash with soap and water. If irritation is persistent, contact a physician.

KEEP OUT OF REACH OF CHILDREN

See M.S.D.S. for complete safety information.

HANDLING AND STORAGE: Keep container tightly closed when not in use. Avoid excess heat and open flame. Rinse empty container before recycling container.

DISPOSAL: Offer empty container for recycling. If recycling is not available, discard container in trash. Discard used towel in trash.

This product contains	CAS Number
Mineral Oil	.8042-47-5
d-Limonene	.5989-27-5
Isoparaffinic Hydrocarbon	.64742-47-8

1549.112006

NFPA® RATINGS
Flammability

